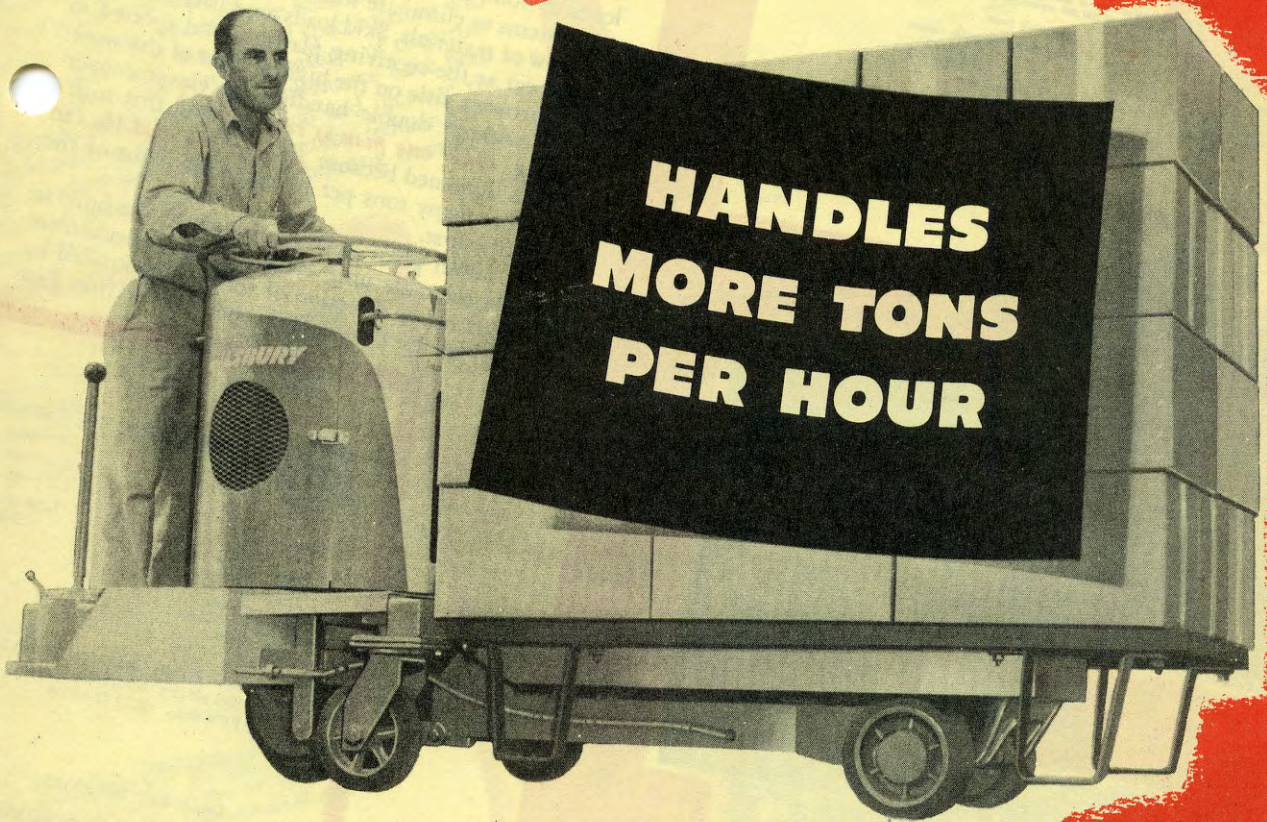


**SALSBUURY**

# *Turreteer*



"... saves us many dollars in handling our merchandise," says warehouse owner.

# STAR TRUCK & WAREHOUSE CO.

EDGAR & STANLEY  
INCORPORATED  
14 HALL STREET  
MORRIS STANLEY  
MANAGER

PIONEER TRUCK CO.  
1817-1825 INDUSTRIAL STREET  
LOS ANGELES 21, CALIFORNIA  
REG. NO. 6141  
December 3, 1946

NEW YORK OFFICE  
400 WEST 42ND STREET  
NEW YORK 36, N.Y.

CHICAGO OFFICE  
114 S. WABASH STREET  
CHICAGO 4, ILL.

SAN FRANCISCO OFFICE  
345 MARKET STREET  
SAN FRANCISCO 3, CALIF.

Salsbury Motors, Inc.  
Pomona, California.

Attention: Mr. E. F. Salsbury

Gentlemen:

We have been using the Salsbury Motor Trucks in our warehouse for the past three years. We find that your revised motor is very good and we would not want to be without it. It saves us many dollars in handling our merchandise from car to point of rest. On account of the light weight of this truck, we can use it on the elevators with three or four pallets, whereas our fork-lifts only enable us to go on there with one.

We are now using four of these trucks, which seems to be plenty in our warehouse of 250,000 square feet.

Very truly yours,  
STAR TRUCK & WAREHOUSE COMPANY  
*E. S. Stanley*  
E. S. Stanley, Owner

855:1ba



## "... paid for themselves the first six months

Here's proof of definite savings to be effected by employment of the Salsbury Turreteer *-savings in time-savings in breakage-savings in manpower-savings in equipment cost.*

These warehouse trucks are the result of exhaustive studies in the horizontal movement of materials and are specifically designed for the handling of loads to 4000 pounds. They team nicely with existing systems to eliminate waste motion and speed up the flow of materials. Skid loads are easily picked up in the car at the receiving platform and spotted in the narrowest aisle on the highest floor of the warehouse without double handling or elevator overloading. *Only one man is required* and that man's work is lightened because *he rides the load.* He can handle as many tons per hour the last hour of the day as the first.

The power plant and the drive wheel are built as a single rotatable unit. Reversing gear mechanism is eliminated as direction of travel is controlled by rotation of the complete Turret Power Unit. Fast

reversing motion  
A s...  
vided  
6 hp  
engin  
missi  
are  
Dri  
U  
bur  
tio  
ti



OVERLAND TERMINAL  
1807 EAST OLYMPIA  
LOS ANGELES 17, CALIF.  
PHONE 1-2-3-4-5  
Los Angeles  
December

GORDON ROSS  
VICE PRESIDENT-MANAGER  
J. D. SUTHERLAND  
ASST. TO MANAGER  
E. M. ELY  
SUPERINTENDENT  
C. B. JONES  
CHIEF CLERK

Mr. E. F. Salsbury, Vice President  
Salsbury Motors, Inc.  
Pomona, California

Dear Mr. Salsbury:

We have just completed Salsbury Turreteer trucks have paid for themselves in time and labor saved are anticipati... purch...

SALSBUARY

JDS:rs

es in  
of operation."

is accomplished while drive unit is in  
both flow of power—as required—is pro-  
the Salsbury Model 600 Power Package: a  
Salsbury four cycle, single cylinder, air-cooled  
equipped with a Salsbury Automatic Trans-  
and a Salsbury Automatic Clutch. Ramps  
ore easily negotiated with this Automatic  
as there are no gears to shift.  
surpassed load stability is inherent in the Sals-  
Turreteer due to the unique type of articula-  
which is exclusive with this equipment. Wide  
d, four point load suspension is provided at all  
es, thus insuring smooth, safe handlings.  
An combination of the detailed specifications will  
ow just how many practical features of construc-  
operation and ease of maintenance have been  
incorporated to speed up the job and increase the  
oads handled per man-hour, thereby reducing to a  
minimum production and warehousing transporta-  
tion costs.

AREHOUSE COMPANY  
IC BOULEVARD  
I, CALIFORNIA  
NITY 1146  
s California  
er 20, 1946



resident

cost study on operation of our  
two purchased in January 1944  
in the first six months of operation  
We purchased two more in 1946 and  
se of two more in 1947.

Yours very truly,

*Arthur J. ...*  
Assistant Manager

CALIFORNIA WAREHOUSE CO.  
W. E. RESENDEN  
Merchandise Storage - Distribution  
Transportation

1948 WHOLESALE ST.  
LOS ANGELES 21  
December 18, 1946

Salsbury Motors, Inc.  
1201 S. Lexington Ave.  
Comona, Calif.

Gentlemen:  
Acknowledging your letter we give our opinion of your Salsbury  
Lift Trucks. We feel that in as much as we are continually adding  
to our fleet, that we find them very efficient and particularly movable, thus cutting  
down aisle space.

Cordially yours,  
California Warehouse Co.  
W. E. Resenden

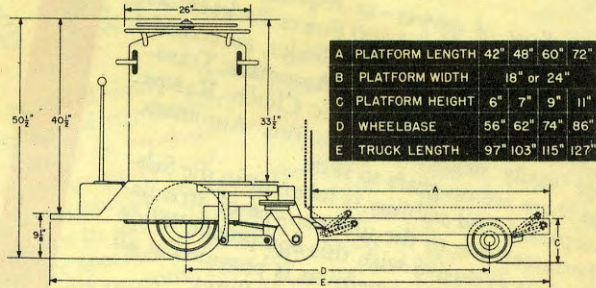
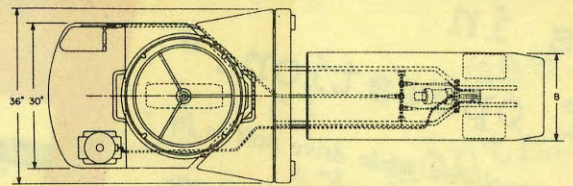
22/34





**SALSBURY**

**Turreteer**



A	PLATFORM LENGTH	42"	48"	60"	72"
B	PLATFORM WIDTH	18" or 24"			
C	PLATFORM HEIGHT	6"	7"	9"	11"
D	WHEELBASE	56"	62"	74"	86"
E	TRUCK LENGTH	97"	103"	115"	127"

**TURRETEER—Platform Lift Type**  
Capacity 4000 lbs.

**Type TLW—24" wide**

**Type TLN—18" wide**

Model Number	Lift	Lowered Height	Platform Length	Clearance
4642	3 1/2"	6"	42"	2"
4648	3 1/2"	6"	48"	2"
4660	3 1/2"	6"	60"	2"
4672	3 1/2"	6"	72"	2"
4742	3 1/2"	7"	42"	2"
4748	3 1/2"	7"	48"	2"
4760	3 1/2"	7"	60"	2"
4772	3 1/2"	7"	72"	2"
4942	3 1/2"	9"	42"	4"
4948	3 1/2"	9"	48"	4"
4960	3 1/2"	9"	60"	4"
4972	3 1/2"	9"	72"	4"
4-11-42	3 1/2"	11"	42"	4"
4-11-48	3 1/2"	11"	48"	4"
4-11-60	3 1/2"	11"	60"	4"
4-11-72	3 1/2"	11"	72"	4"

**Capacity** ..... 4000 lbs.  
**Speed** ..... Up to 8 mph.  
**Turning Radius** ..... 42" Platform—56"  
 48" Platform—62"  
 60" Platform—74"  
 72" Platform—86"  
**Platform Lift** ..... 3 1/2"

**Hydraulic System** . . . Heavy Duty Blackhawk Pump located on operator's platform. Specially designed heavy duty ram.  
**Load Wheels** . . . Rear—6" or 9" dia. x 5" tread  
 Caster—9" dia. x 2 1/2" tread.  
**Load Distribution** . . . . . Rear Wheels 80%  
 Caster Wheels 20%  
**Weight** . . . . . Approx. 1000 lbs.

Salsbury Turret Trucks are manufactured and sold under the following U. S. patents: 2,230,293, 2,260,795, 2,260,796, 2,260,797, 2,260,798, 2,275,046, 2,370,866.

Foreign patents issued.  
 Other patents pending.

Other **SALSBURY** TURRET TRUCKS include the *Turretug*



*Turretug*



... ask for details

**YOUR FACTORY REPRESENTATIVE**

**SALSBURY MOTORS, INC.**

A Subsidiary of Northrop Aircraft Inc.  
 1201 LEXINGTON • POMONA, CALIFORNIA