

THE *SALS*



The Salsbury "85" De Luxe comes complete with plexiglass windshield, chromium bumpers, recessed headlamp, package compartment lock, locking ignition, foot starter, auxiliary hand throttle, choke, protected rear light, leather-covered, inner-spring cushioned seat.

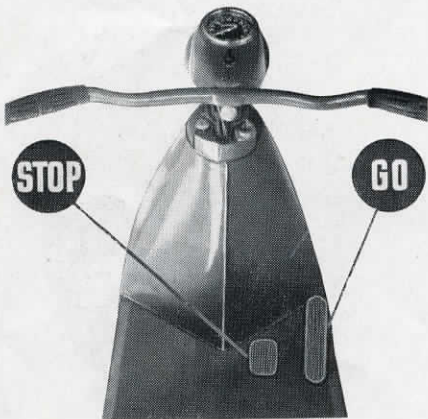
SALSBURY



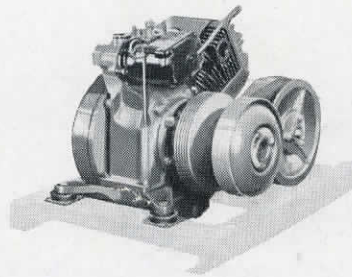
The Salsbury "85" Standard is identical with the De Luxe model except for the front cowling, recessed headlamp and plexiglass windshield. Both models are 88 inches long. Accessory equipment includes side cars, tandem seat, spare tire, speedometer, and front-wheel brake.

THE NEW **SALSBURY**

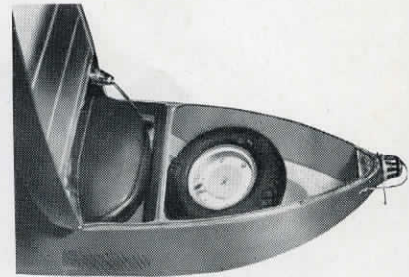
MOST COMPLETELY AUTOMATIC VEHICLE EVER BUILT



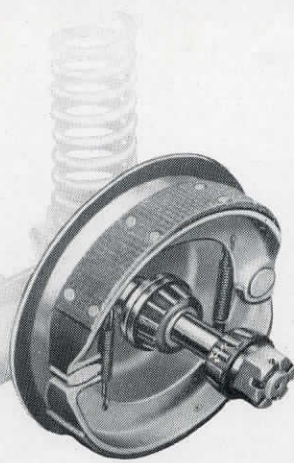
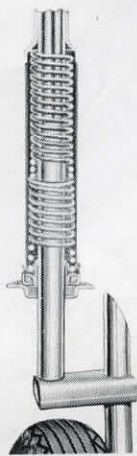
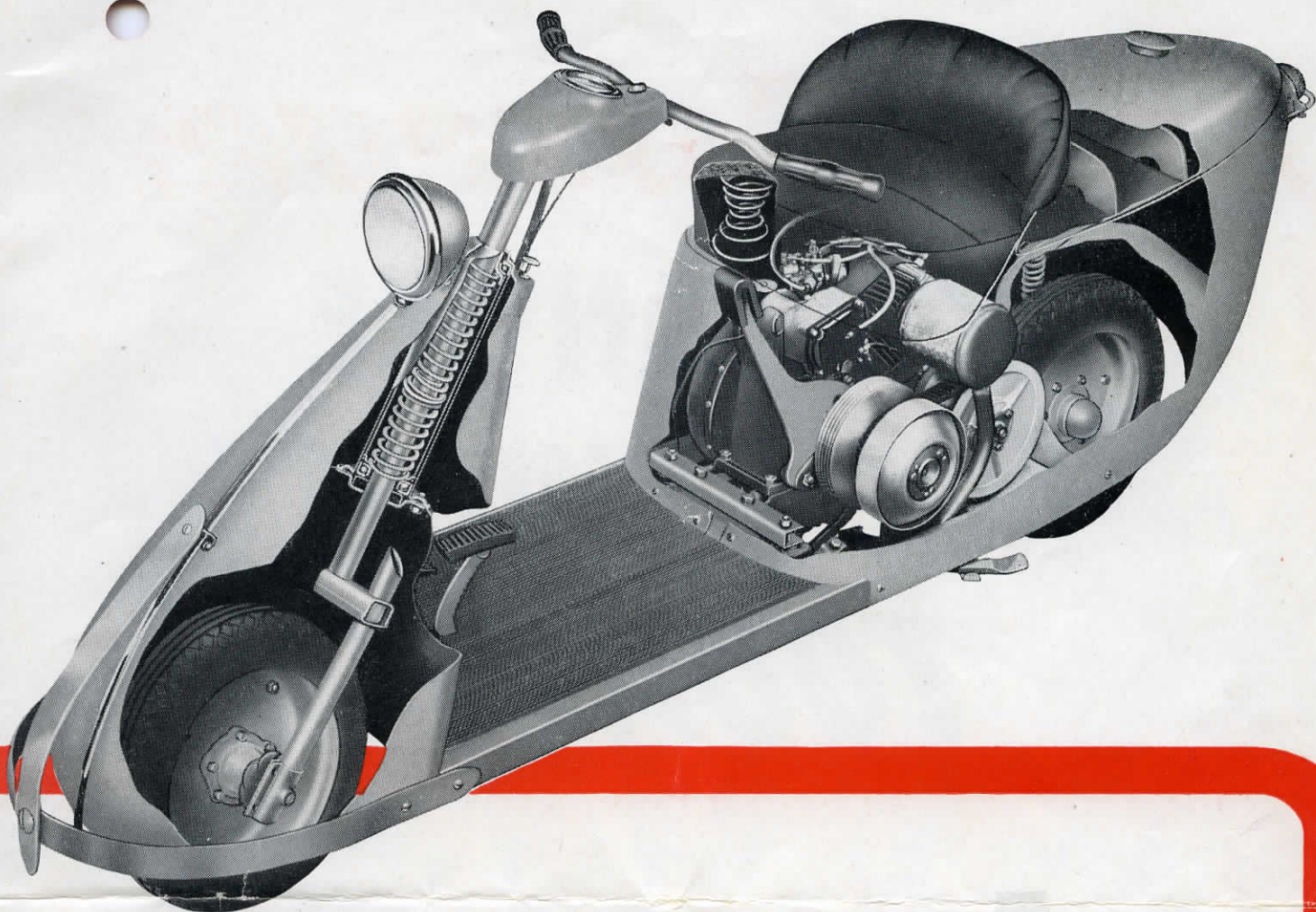
1 EASIEST TO DRIVE—Because of its perfect balance, the Salsbury is easier to ride than a bicycle. Automatic clutch and transmission reduce controls to two pedals—*Stop* and *Go*. Automatically “gears” down for steep hills. Only vehicle made which provides maximum performance for all road conditions.



2 MOST POWERFUL—The four-cycle, six-horsepower engine is rugged, by far the most powerful and efficient. It will take you up steep hills at car speed. Exclusive *straight-shot* carburetion gives you immediate response, fast getaway... and forced-feed lubrication with gear-type oil pump guarantees a cooler, constantly-lubricated motor.



3 BIGGEST PACKAGE COMPARTMENT—one and one-half cubic feet. The Salsbury is the only scooter big enough to carry a spare tire and wheel—and there's room left over for groceries!



4 MOST COMFORTABLE—Rubber-cushioned engine mounts and aircraft-type wheel suspension give you a smooth, almost vibrationless ride. And the deep, spring-filled leather cushion—plus plenty of leg space—allows you to go long distances comfortably.

5 SAFEST—The Salsbury has a large internal (7 inch) expanding brake that will practically stop you "on a dime." Good brakes plus a low center of gravity, high maneuverability and quick pickup make it the safest vehicle of its kind. High and low-beam headlamp operated by generator built in to flywheel.

6 EASIEST TO SERVICE—The easy-to-change wheels of the Salsbury are an exclusive feature. No disconnecting of brake or chain. Just remove the rim nuts as you would on an automobile and the wheel lifts right off the axle. Easy accessibility of all moving parts for service.

**YOU CAN SEE
AND DRIVE IT
*TODAY!***

THE *SALS*BURY

***SALS*BURY MOTORS, INC.**

POMONA, CALIFORNIA

A Subsidiary of Northrop Aircraft, Inc.

PRINTED IN U. S. A.
Copyright, 1946, Salsbury Motors, Inc.


SALSBURY