

Speed up

PLANT TRANSPORTATION

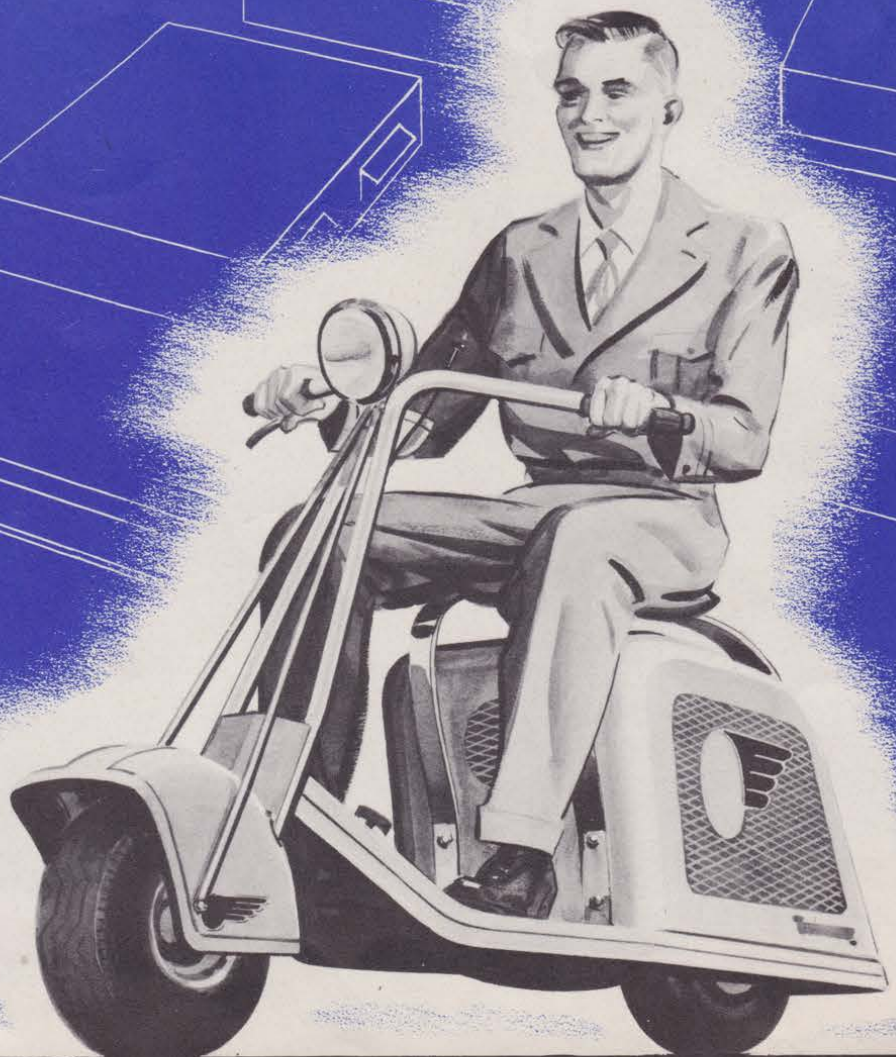
WITH

SALSBURY

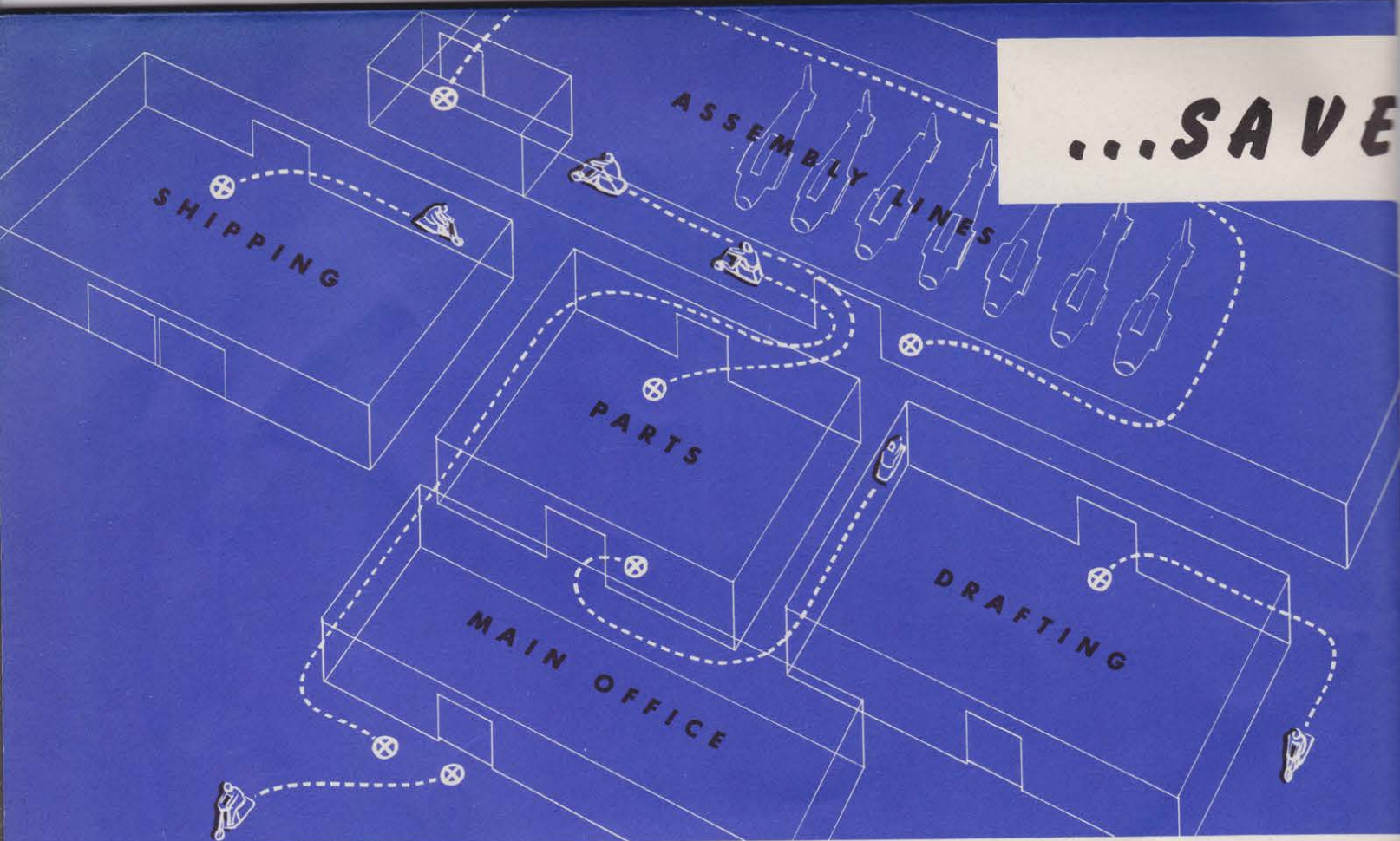
SUPER



CYCLE



...SAVE



Where, when, how can you conserve dollars, men, and even materials, with Salsbury Super-Cycles? * Consider: speeding inspectors and supervisors along the assembly lines... whisking draftsmen to another building or section to check on some detail... rushing a messenger from front office, to stock room, to shipping room... taking an executive on an intra-plant errand... touring a visiting official through the plant... conveying some light material rapidly to another section of the plant, perhaps avoiding a break in the smoothly flowing rhythm of production... then there are emergencies: rushing the fire extinguishers up to quench a sudden fire... or a first aid vehicle, rapidly moving down a narrow aisle to the spot where the accident occurred... a patrol cycle for watchmen. * These are only a few places in a plant where the easily maneuvered, reliable Salsbury Super-Cycle can pay for itself in a very short time.



COPYRIGHTED 1942
SALSBUURY CORPORATION

The **SALSBUURY** SUPER-CYCLE



CONSERVES



MAN-HOURS

...RAISE MORALE

...STEP UP PRODUCTION

...WITH A FLEET OF SALSBURY SUPER-CYCLES

For the plants that want to go places—fast—there's no more critical bottleneck than inter-and intra-plant transportation. How many of your executives, foremen, inspectors, engineers, supervisors, and even messengers are trudging from one section of your plant to another?

Stop to consider the serious loss your plant may be facing now, during the most critical of times, and you'll be ready to say: "Show me how I can recover some of this non-productive, non-profitable time!"

One sound answer... proved in daily use in numerous war plants and Army,

Navy and Air Bases... is the quick-starting, effortlessly operating Salsbury Super-Cycle, successor to yesterday's Motor Glides, power bikes and light motorcycles.

Thousands of delighted war production men who use the Salsbury Cycle daily on their jobs can confirm its dependability, comfort, safety and economy (more than 100 miles to the gallon!).

Read about its scores of features... and survey your plant to see how many you'll need to throw out slow-motion—bring in higher production, better morale!

THEIR



ENERGY

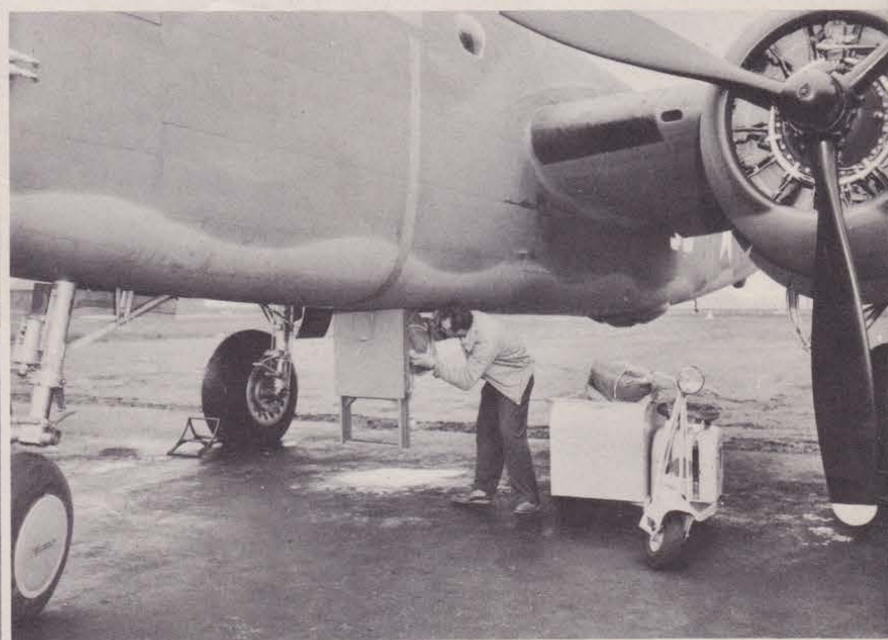
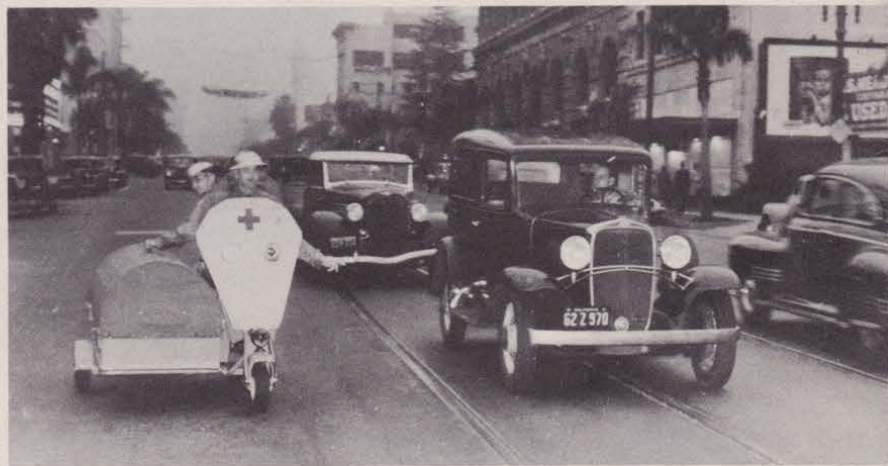
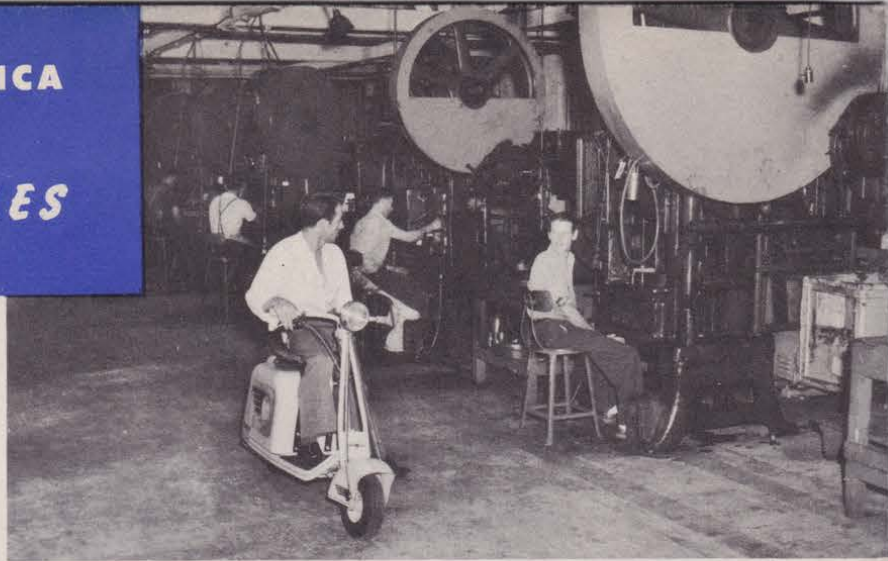


FOR THE



Actual Job!

**WAR PLANTS ALL OVER AMERICA
SAVE MAN-ENERGY WITH
SALSBURY *SUPER-CYCLES***



PRODUCT OF SALSBURY CORPORATION, 1161 E. FLORENCE AVE., LOS ANGELES, CALIF.